

INVISIBLE OVERHEAD DOOR



invisible
de nardi®

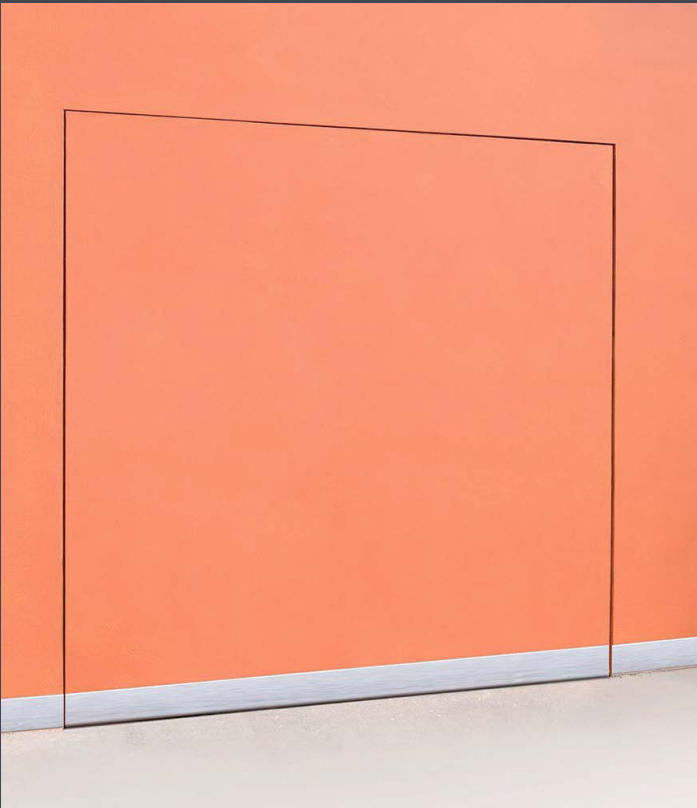
Residence - Marcon, Venezia
Arch. Stefano Maurizio



Restructuring building in Vicenza
Customer: Carmini Immobiliare SRL - Vicenza
Designers: Architects Stefano e Roberto Orsanelli
Planning supervisor: Ing. Mariano De Facci



POSSIBLE EXTERNAL FINISH



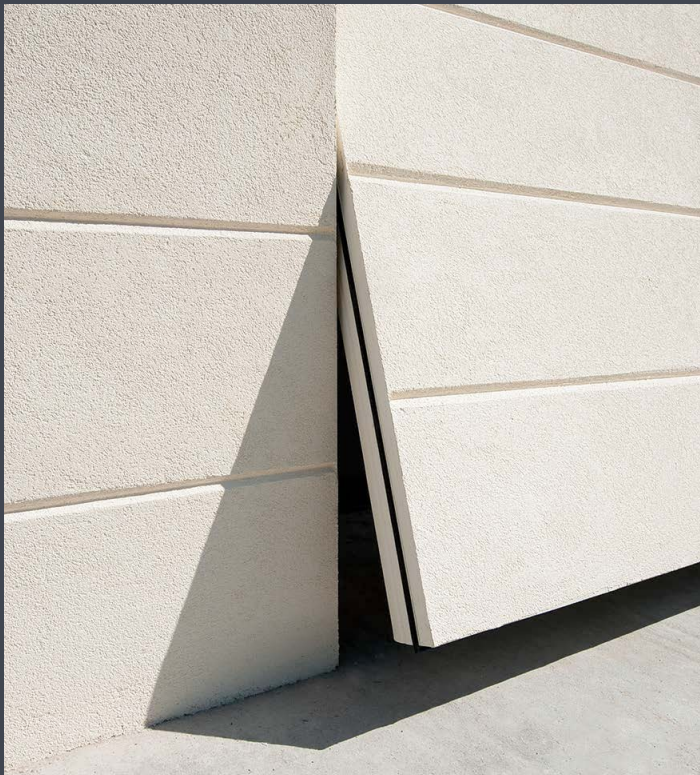
Example of a smooth finish



The finishing applied on the door must not exceed 3 Kg/sq.m.

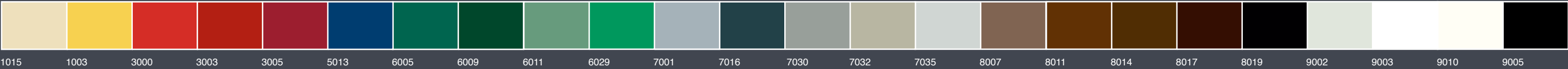


Example of a ribbed finish



The flutings are made to project after supply of the drawings

INTERIOR FINISH – Color steel RAL



ACCESSORIES



Chrome satinized handle or white paintable (patent application N. TV2014A000056)

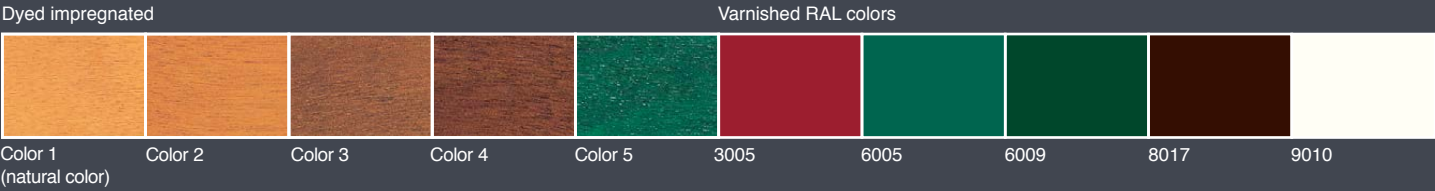


Long chrome satinized handle or white paintable, ventilation with sheets.



Detail ventilation with sheets

INTERIOR FINISH - color wood



INTERIOR FINISH



Standard. Horizontal reinforcement Omega, finishing in poplar plywood, painted or varnished.



With insulation. Finishing with internal panel of Okoumé, painted or varnished.



With insulation. Finishing with steel corrugated, extra large and painted sheet.

SAFETY ACCORDING TO CE MARKING

Invisible overhead doors are CE certified and are equipped with the following safety systems:

Anti-fall system with double certified cable: breaks a cable? The second intervenes. Breaks the second cable? The door is locked in the position in which it is, thanks to the parachute of the series. Since 1998 it has never occurred the break of both certified cables.

Limitation of forces: an electronic system adjusts the engine power, maintaining the impact forces within the parameters of safety.

Mechanical safety rib: provides continuos self-test excluding any possibility of uncontrolled failure.

Protection of lever arms: safety and beauty. The levers are designed and positioned as the law requires, are coated to balance into the overhead door.

Durability and manoeuvrability: tested with 20.000 cycles of opening and closing, they didn't have to undergo interventions of extraordinary maintenance and/or replacement of components.

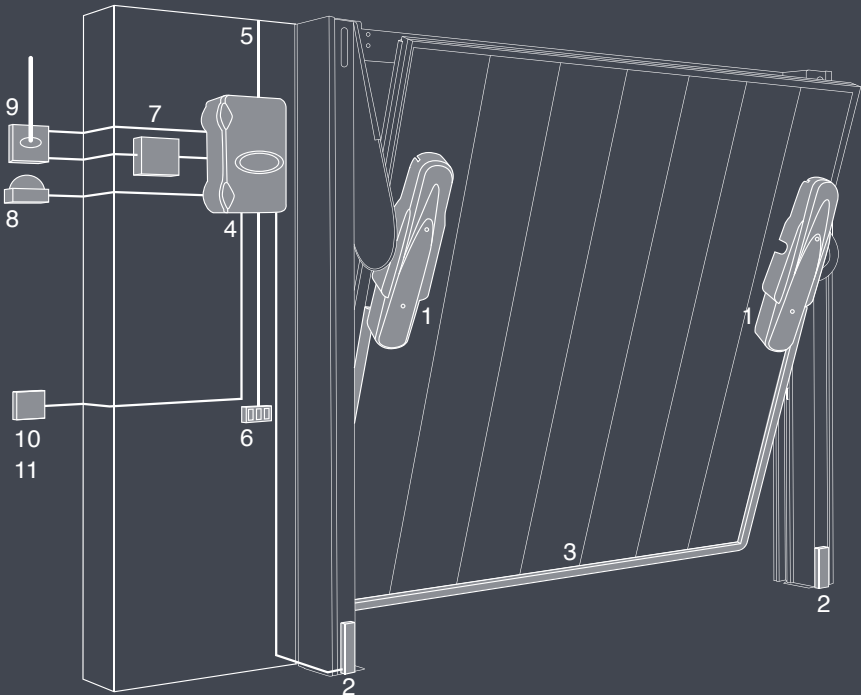
Wind resistance: certified class 2.



- ① Anti-fall system with double certified cable
- ② Limitation of forces
- ③ Mechanical safety rib
- ④ Protection of lever arms

AUTOMATION ON BOARD: DE NARDI by FAAC

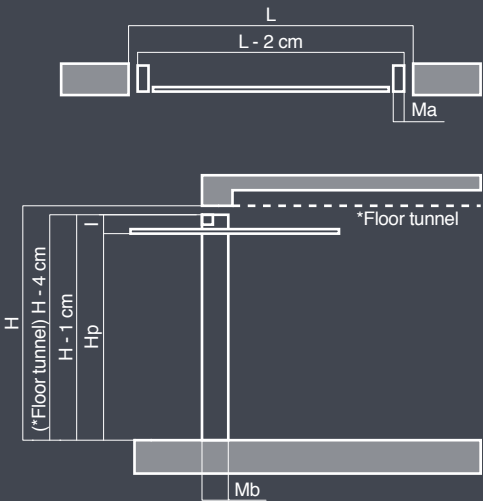
- 1 Motor block
- 2 Photocell
- 3 Mechanical rib
- 4 Automation device
- 5 Supply from breaker switch
- 6 Internal pushbutton
- 7 Radio receiver
- 8 Flashing light
- 9 Antenna
- 10 External key selector
- 11 Two-channel transmitter or four-channel transmitter



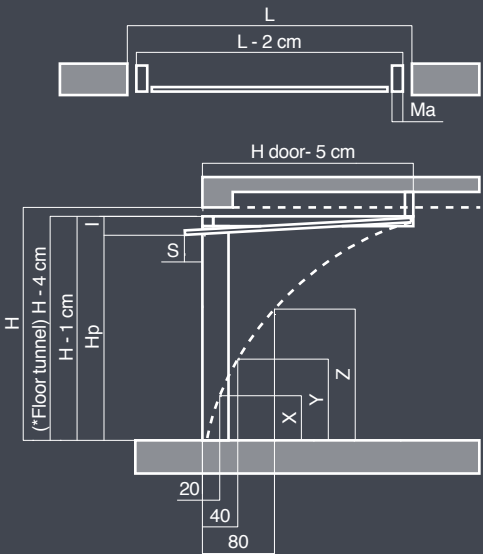
THE “GEARMOTORS FAAC DN 24” are installed exclusively on overhead doors De Nardi. Two leading companies that provide a service to the highest of quality and safety. The innovative automation device De Nardi is the thinking mind of the whole system: it manages the speeds to reduce the mechanical stress on the motors and gates; it signals the achievement of the working cycles limit to require the maintenance; it also deals with the management of a long series of functions, including: lock and unlock buttons, opening by a photocell, reversal of the motor controlled by the anti-crushing rib, photocells, buffer batteries for emergency operation in the event of a power failure.

DIMENSIONS

Projecting version



Non projecting version



L= horizontal hole light
H= vertical hole light
Hp= passage height
l= 31 cm manual both projecting and non-projecting version, 34 cm motorized both projecting and non-projecting version (drip +4 cm)
S= 7 cm normal non-projecting version, 0 cm arc-non projecting version
Ma= jamb width
Mb= jamb depth

*In case of floor tunnel, the height of the door should be calculated 4 cm in less of the light of the vertical hole.

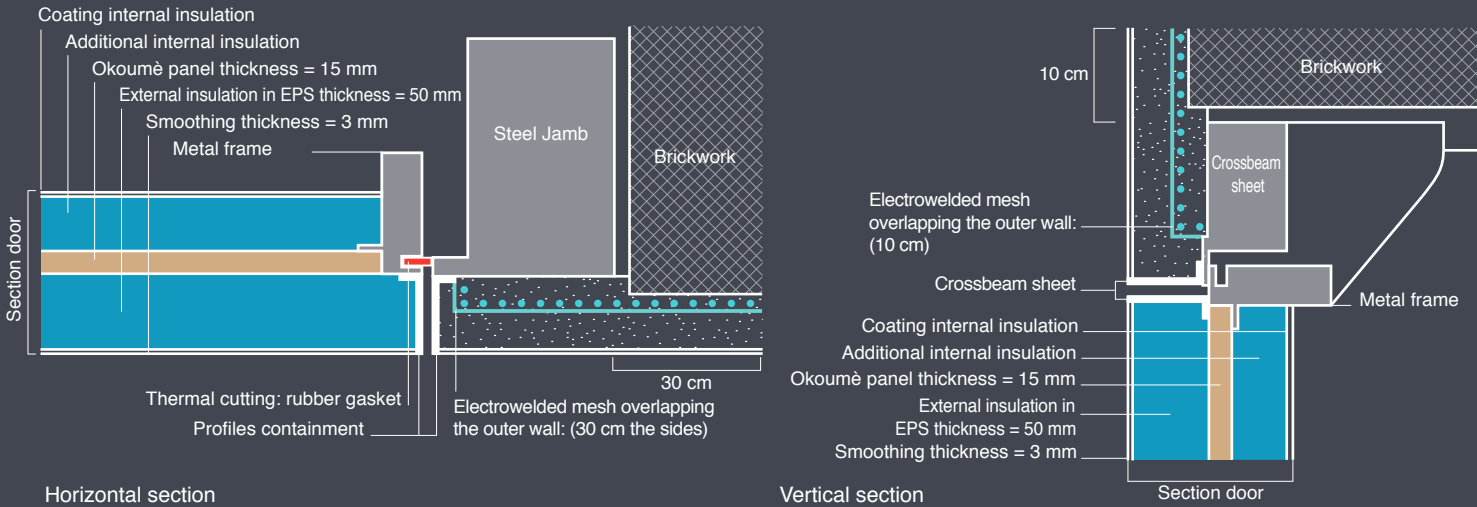
Measures: width up to 500 cm. – height up to 280 cm.

JAMBS SIZE PROJECTING OR NON PROJECTING VERSION WITH OR WITHOUT MOTOR-DRIVE UNIT			
	Up to L 340 x H 280 cm	Up to L 420 x H 280 cm	Up to L 500 x H 280 cm
Standard	14 x 29	16 x 29	18 x 29
With insulation finishingin Okoumè	16 x 29	18 x 29	no executable
With insulation finishing in sheet	18 x 29	18 x 29	no executable

H	X	Y	Z
200	50	81	131
210	50	83	133
220	50	85	135
230	50	87	137
240	50	89	139
250	50	91	141
260	50	93	143
270	50	95	145

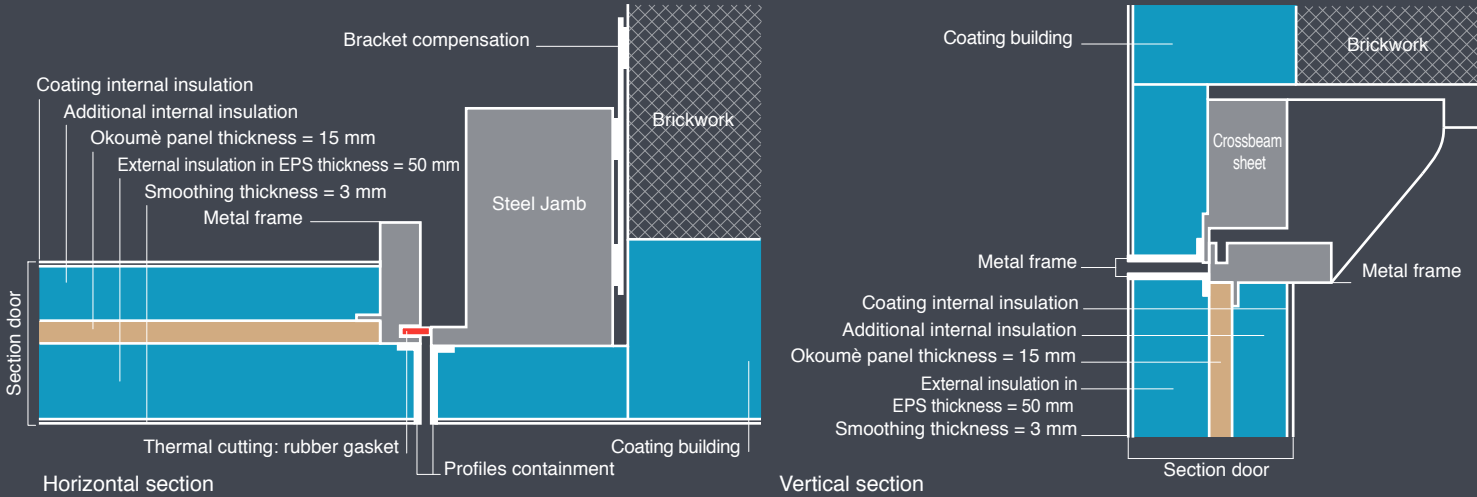
CONSTRUCTION DETAILS

Section type with plaster perimeter (In case of plastered building walls, the overhead door is supplied with a electrowelded mesh)



Horizontal section

Section type with coating (In case of building walls with coating, the overhead door is supplied without electrowelded mesh)



Horizontal section

Vertical section

INVISIBLE

Design Alberto Basaglia Natalia Rota Nodari + De Nardi R&D

INVISIBLE: THE FUTURE THAT NOT WAS

Enter directly into the house by car, through a breach in the wall that magically disappears.

De Nardi has made it possible with the Invisible system. An overhead door that blends perfectly with the wall, so as not to interrupt the visual continuity of the architectural volumes. The performance in terms of energy containment on Invisible are such as to allow car lovers to park their "race car" directly in the living room.

K= from 1,1 to 1,3 W/sq.m. • THE BEST VALUES OF TRANSMITTANCE ON THE MARKET

With the Invisible system, De Nardi has reached the maximum performance in transmittance value for an overhead door. More the value of transmittance is low, less heat is dispersed outside of the overhead door. This is particularly important when the garage is adjacent to the heated rooms of a house, both underground and above-ground. Less dispersed heat, less production of heat, less CO2 into the atmosphere: that's where the ecological character of Invisible is born. The standard version gets a K value of 1,3 W/sq.m., which drops to 1,1 W/sq.m. with the addition of further internal insulation.

DESIGN AND ITALIAN STYLE

Invisible, like all the overhead doors De Nardi, perfectly expresses the assumption "Form and Function" that summarizes the know-how typical of Italian design: high-quality products that are distinguished by the beauty of the shapes. De Nardi uses the collaboration of Studio Basaglia Rota Nodari for the design direction of their brand. A 100% Italian team, consisting of company and designer, who works to create innovation. The handle can make understand the innovative concept of the entire project. A graphic gesture, almost artistic, on the wall that includes all the functions ergonomically designed to facilitate the opening of the door.

FINISHES AND COATING

The exterior finish of Invisible is realized directly on site by the customer, according to the characteristics of the facade. The inner coating can be in wooden Okoumé or in ribbed steel, painted with different colors to choice.

MADE IN ITALY

De Nardi is a reality that reflects at full the stability and reliability of companies and family management, which are the luck of the Made in Italy; is leader in Italy for the production of overhead doors. Founded in 1968, it has always focused on innovation and high quality of its products.

De Nardi controls the entire production cycle: design, production, direct delivery by its own means, setup with highly qualified personnel and, finally, after-sales service, which holds in particular.

The brand De Nardi has always been close to the sports world, in particular to cycling. Numerous and important were the sponsorships at both local and national.



DE NARDI SpA • Via G. Galilei, 9 31020 San Flor (TV), Italy • Tel. +39 0438 403044 Fax +39 0438 408301 • www.invisibledenardi.it info@denardi.it

Art Direction: Alberto Basaglia Natalia Rota Nodari/Architetti Associati • Photo: © milanese communication • REPRODUCTION PROHIBITED. Drawings, photos and descriptions binding but only indicative. DE NARDI SpA, understanding the characteristics of quality, reserves the right to make any changes it considers necessary without notice.

1968
de nardi®